

Tallinn's steps towards sustainability

Vladimir Svet
Vice-mayor



Tallinn

The presentation will introduce

- City of Tallinn
- Strategic goals of the City
- Actions taken to reduce the use of pesticides
- Some examples of the development of public areas in the city



City of Tallinn



Area
159 km²

21 000
employees in
total

Population
454 162

Budget
1 032 mln €

City
administration
1 500

Green City of Tallinn

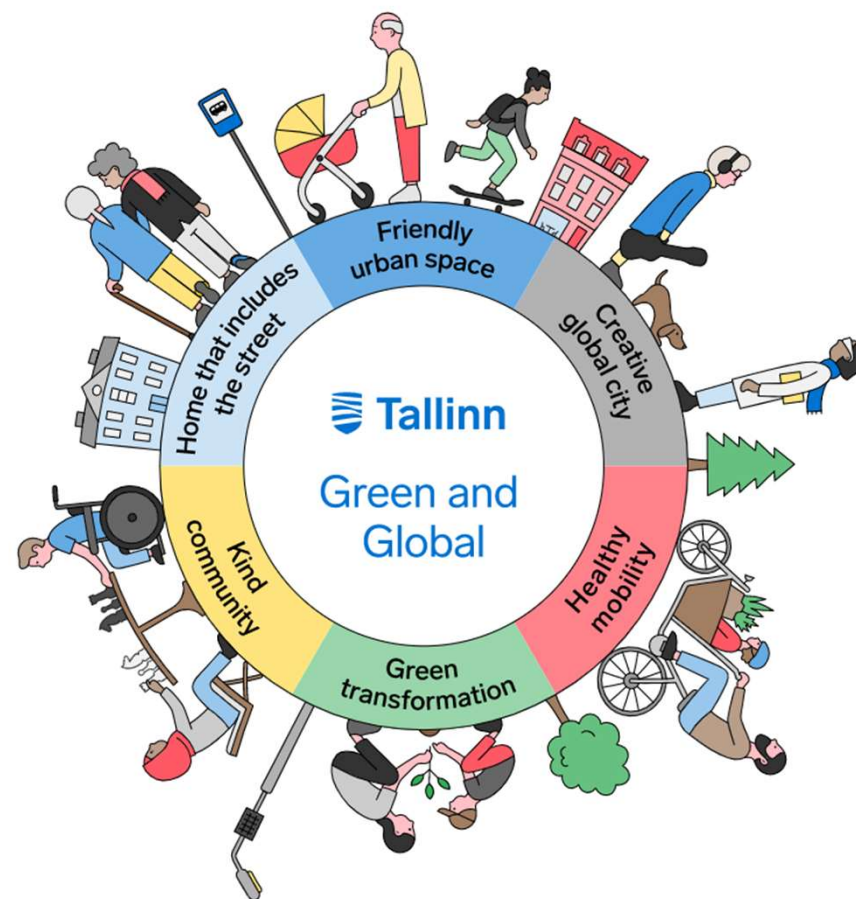
- 55.5 % of the territory is covered with vegetation
- Population density is 2,856 people per km²
- 87.3 % of Tallinners live less than 300 m from a public green area
- Probably most orchid-rich capital in Europe: 20 of 39 wild orchid species grow here
- Over 2000 ha of national & local conservation areas
- Islands Aegna (3,04 km²) and lakes Harku Lake (1,7 km²), Ülemiste Lake (9,4 km²)
- European Green Capital 2023



Tallinn Development Strategy „Tallinn 2035“

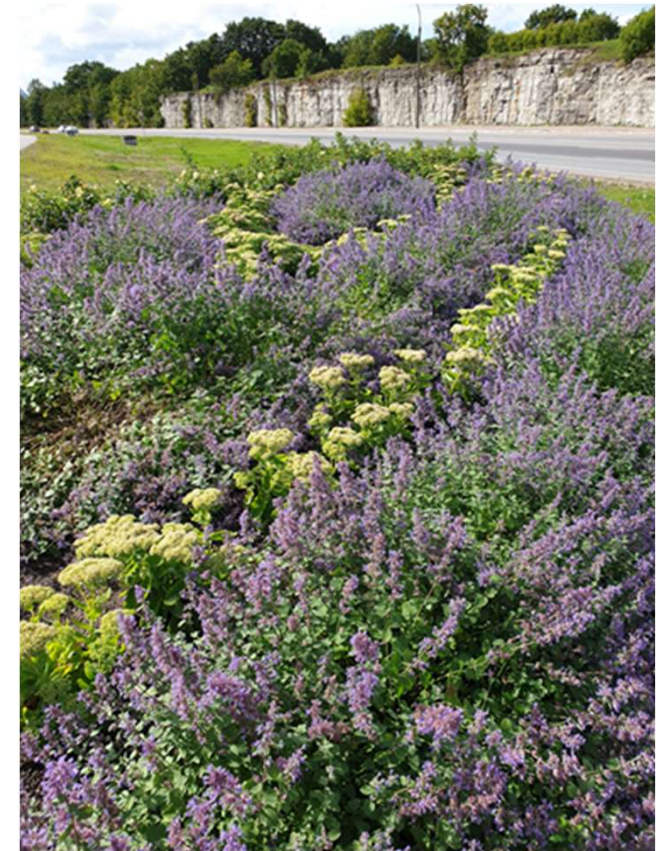
Field of activity: Urban landscape

Tallinn has a valuable and aesthetic living environment with a functioning green network and a diverse landscape that has been designed and maintained in an environmentally sustainable manner.



The first steps was research

Tallinn has organized surveys "Pesticide use survey in Tallinn" The aim: to find out how much and for what pesticides are used and whether there is ambition to reduce their use.



Action plans

- The first action plan was adopted in 2021.
- Activities: collecting data, developing instructional materials, organizing various trainings, conducting research, etc.
- The second pesticide action plan will be part of Tallinn Environment Action Plan 2030



The instructional material

The guidance material has been prepared to assist in the organization of landscaping and maintenance procurements for city institutions, and it includes:

- Excerpts from the most important points of legislation regulating plant protection;
- Description of the principles of implementation of integrated plant protection in Tallinn;
- Recommendations on the handling and avoiding pesticides in maintenance;
- Recommendations for the control of rodents and alien species.

Integrated plant protection

- A list of plants suitable for public areas is being prepared.
- The existing biodiversity plant catalog will be supplemented with the principles of integrated plant protection.

Elurikka haljastuse kataloog

Siiit kataloogist leiad ligi 900 taime, mis sobivad nii haljasalale kui ka aeda. Lisaks kirjeldusele saab iga taime kohta teada, kui väärtuslik on ta tolmeldajatele ja keda ta ligi meelitab. [Loe kataloogist täpsemalt siit.](#) Head kasutamist!

Taime tüüp Valige väärtus x v	Kasvupinnas Valige väärtus x v	Niiskus Valige väärtus x v	Valgus Valige väärtus x v	Tolmeldajad Valige väärtus x v	Väärtus tolmeldajatele Valige väärtus x v
Kõrgusvahemik Valige väärtus x v	Õitsemise aeg Valige väärtus x v	Õite värvus Valige väärtus x v	Kompositsioon Valige väärtus x v	Kasutuskoht Valige väärtus x v	Päritolu Valige väärtus x v
Muud omadused Valige väärtus x v					

Otsingutulemusi: 360 Tühjenda filtrid



Põldvaher

Acer campestre

Väärtus tolmeldajatele: 3



Jaapani vaher

Acer japonicum

Väärtus tolmeldajatele: 2



Harilik vaher

Acer platanoides

Väärtus tolmeldajatele: 3



Punane vaher

Acer rubrum

Väärtus tolmeldajatele: 2

Flowerbeds for pollinators



Pesticide residues in pollen (2021)

Pesticide residues are best encountered in pollen.

Pollen collected from private 12 honey bee hives across Tallinn and results:

- No glyphosates



Pollen collected with pollen traps around Tallinn in cooperation with Tallinn Beekeepers' Society

Organized trainings

Trainings on the following topics were organized for city specialists, landscape architects, landscape builders, gardeners and contractors:

- Plant protection in public areas
- Integrated plant protection
- Weed control using hot water



Near future

Since the city's own activities with pesticides are under control and minimized, other interest groups must be dealt with in order to raise their environmental awareness:

- landowners who own larger land areas
- large property management and maintenance companies
- gardeners and apartment associations



Tallinn's principles regarding public landscaping

- Comprehensive research before design.
- We preserve natural areas as much as possible.
- We prioritize low-maintenance and natural species.
- We invest in high-quality project, high-quality construction and maintenance.



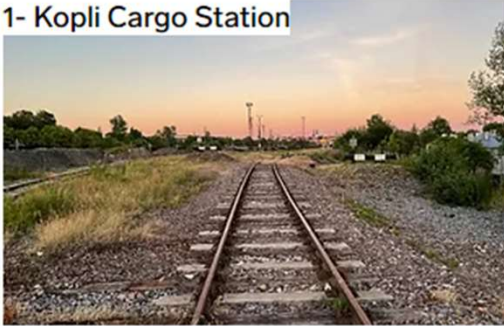
Pollinator Highway

Pollinator Highway is a meadow-like natural environment rich in species, a green corridor and a space for people to move through 6 city districts. Former railway embankment and today's high-voltage line corridor but tomorrow city-wide linear park.



9 Spatial Sections of the Pollinator Highway

1- Kopli Cargo Station



2- Paul



3- Pelguranna



4- Merimets



5- Mustjõe



6- Mill forest



7- Väike-Õismäe



8- Astangu



9- Vana-Mustamäe & Hiiumäe



Tondiraba park

Active recreation areas are built around the growing forest in such a way that they do not spoil the diversity of species living in the park. Tondiraba Park is home to the largest sports and playground in the Baltics, over 5.7 hectares in size. There are a total of 10 kilometers of running and forest trails and footpaths. A skate park, pump track, dog parks, hammocks, barbecue areas and a bicycle service point also await visitors.









Thank you for you attention!



Vladimir Svet
Vice-mayor
Vladimir.Svet@tallinnlv.ee